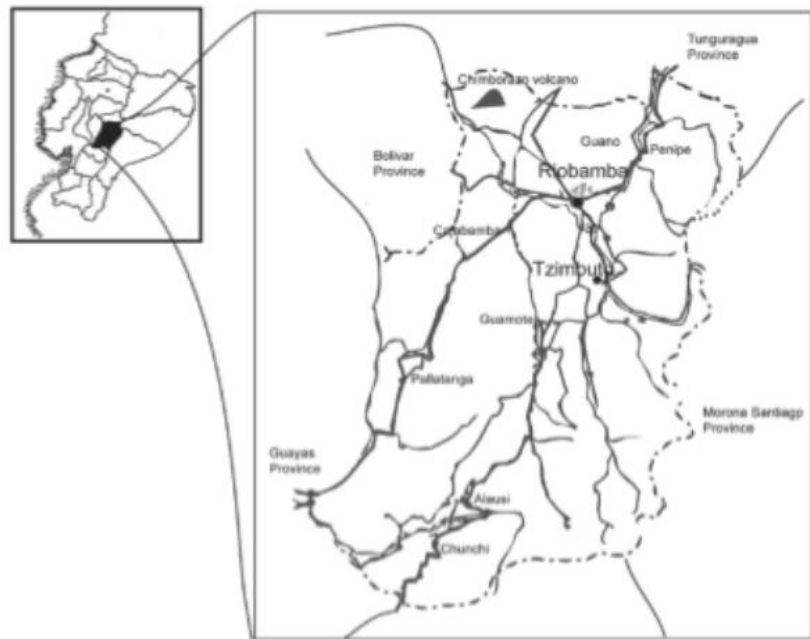


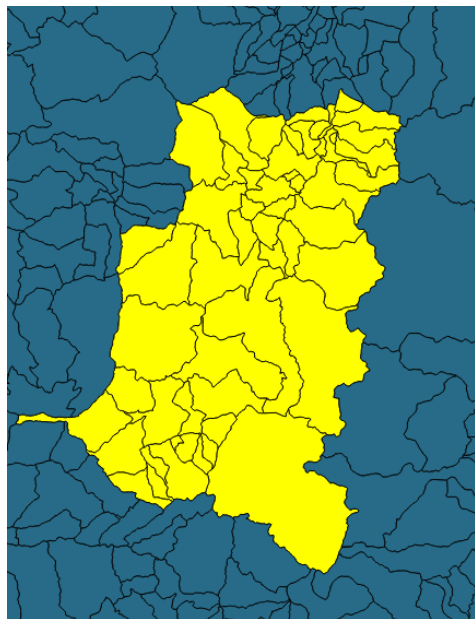
Foodshed Analysis

**A Food Environment
Methodology in Ecuador**

A “foodshed analysis” is a method to characterize the local, directional interactions between culture and the production, distribution and marketing of food.

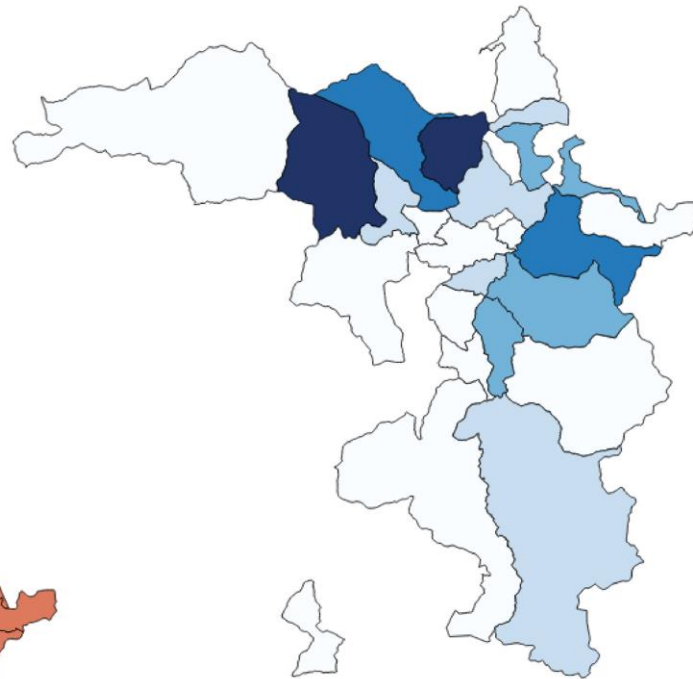
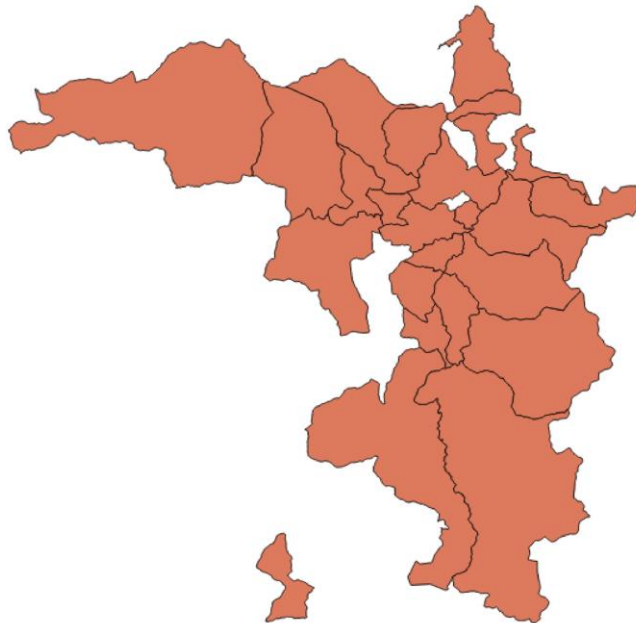


M.Soto. Chimborazo province map. Not scale. May, 2010

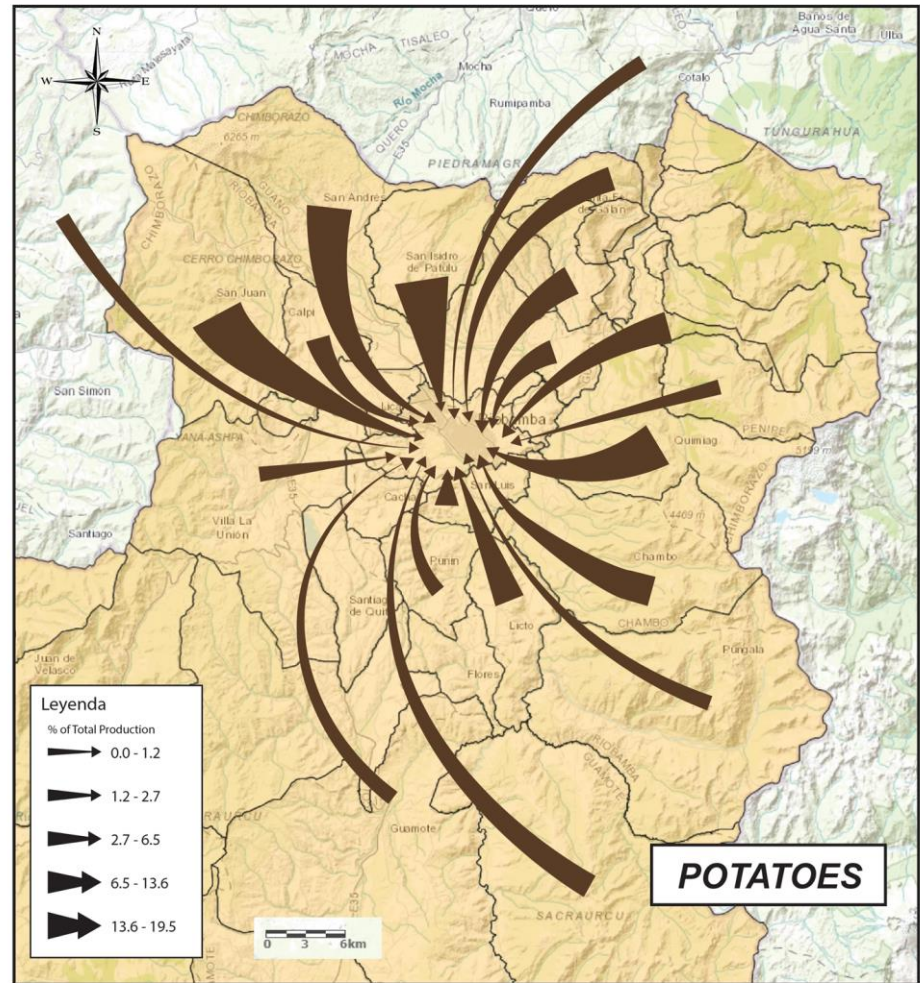
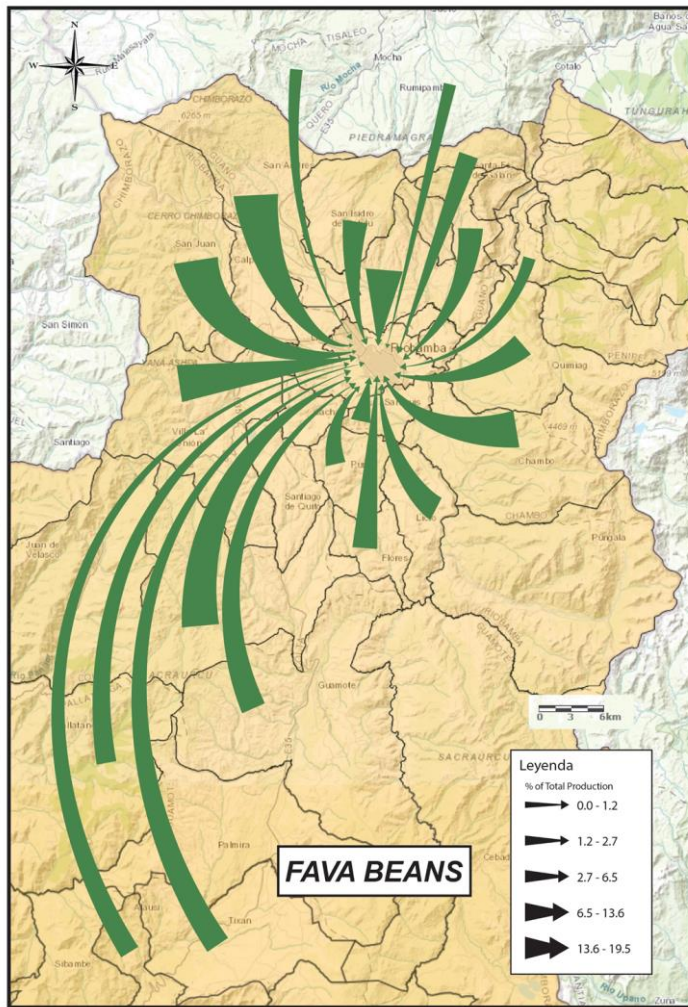


Chimborazo, Ecuador

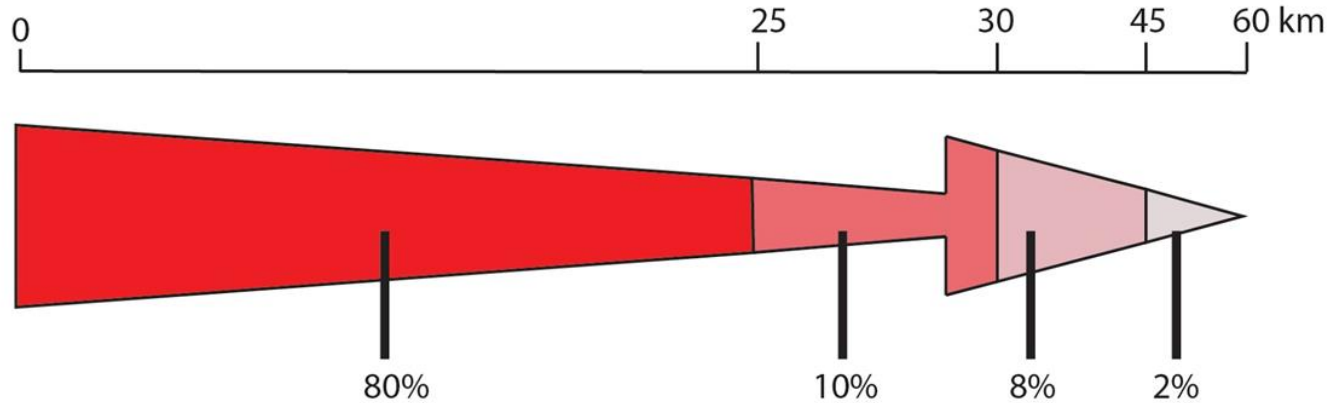
Parishes of Production

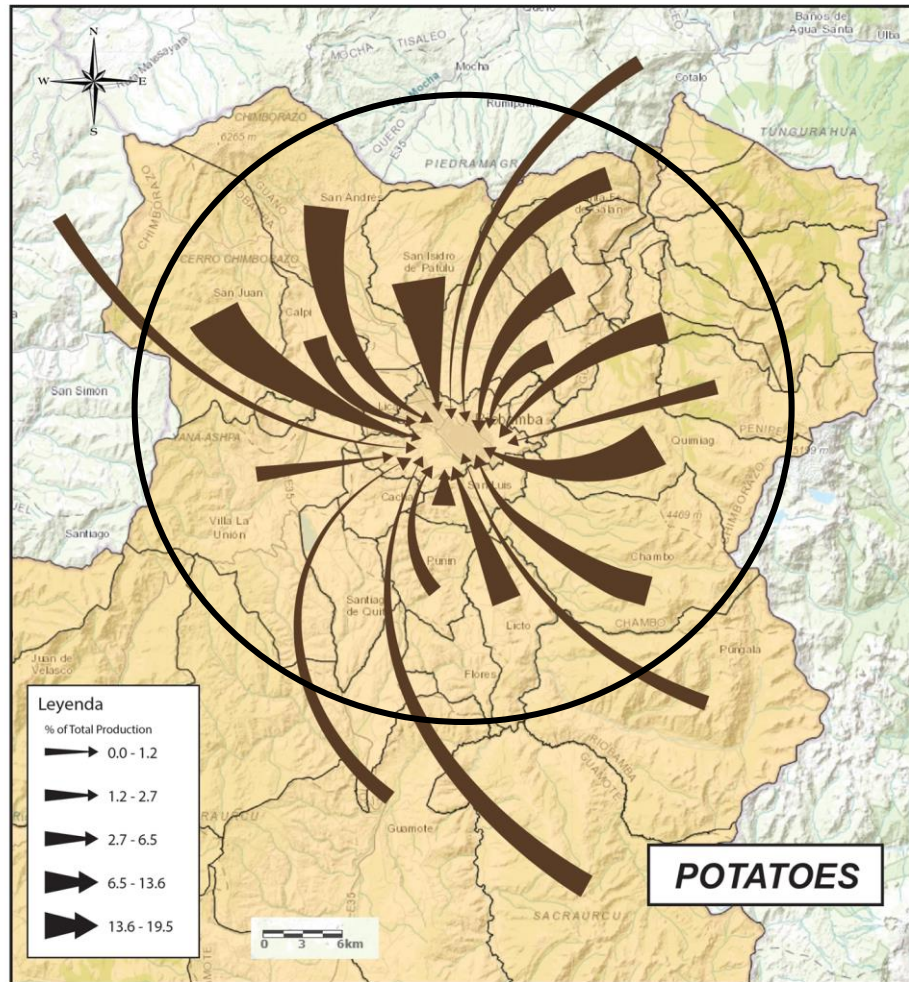
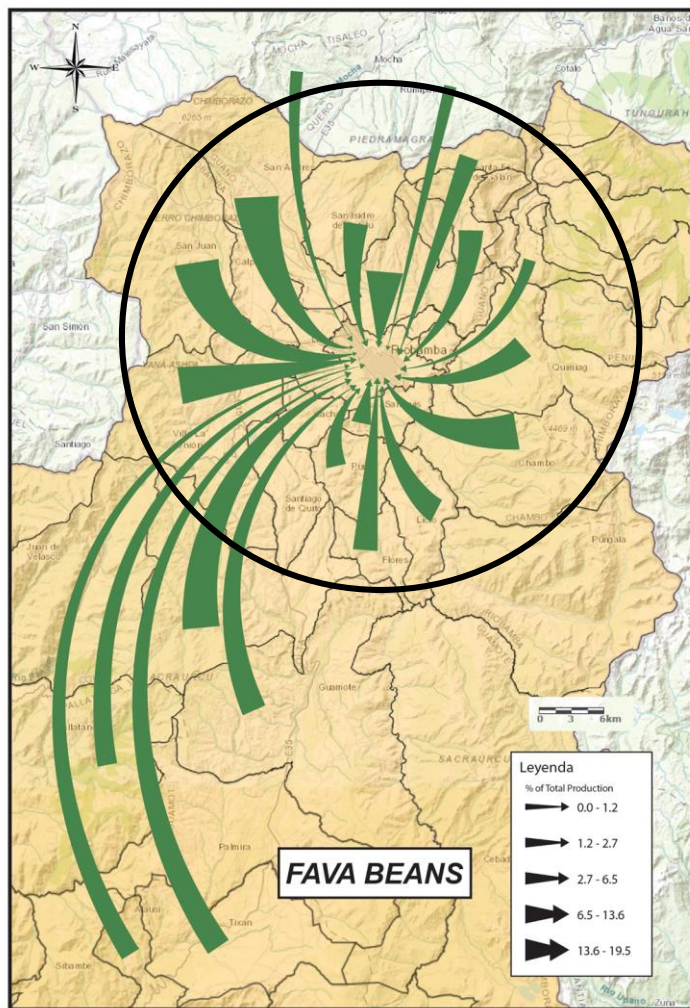


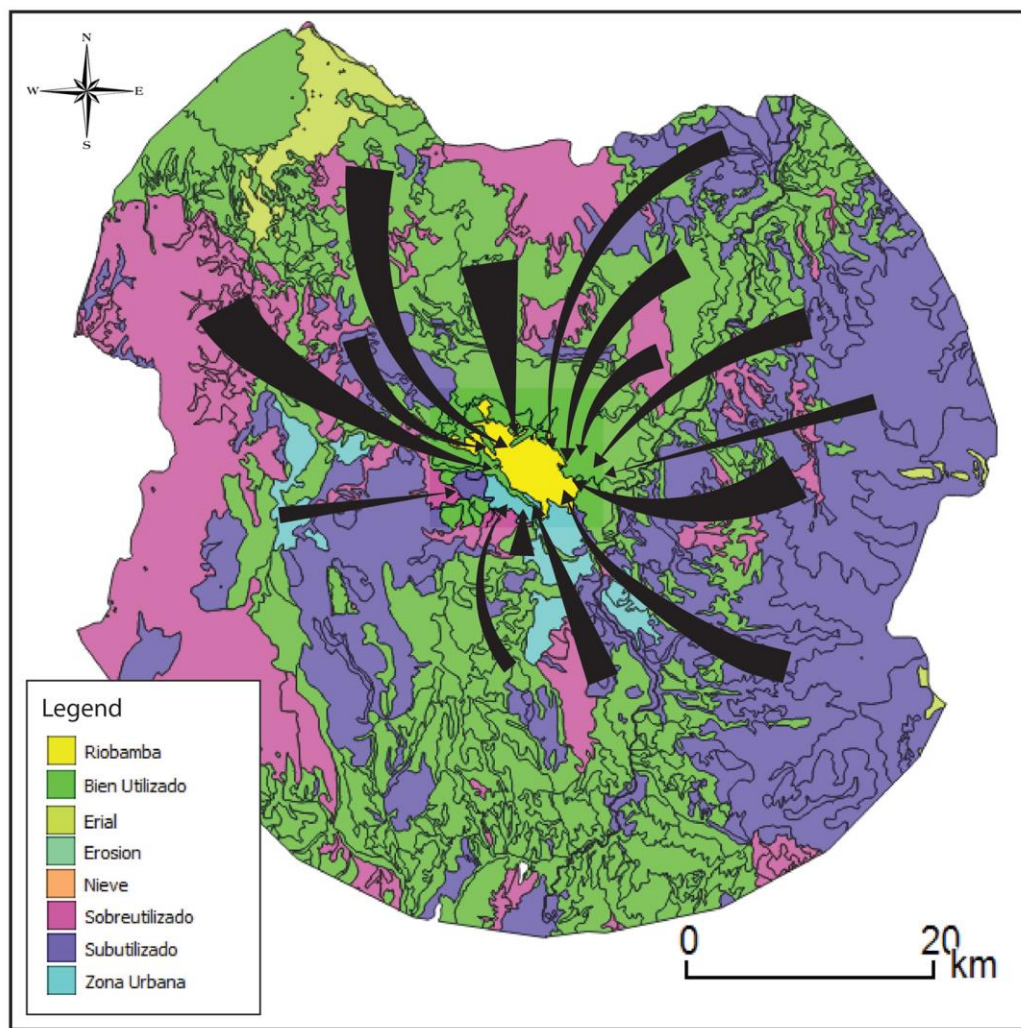
Production Contribution

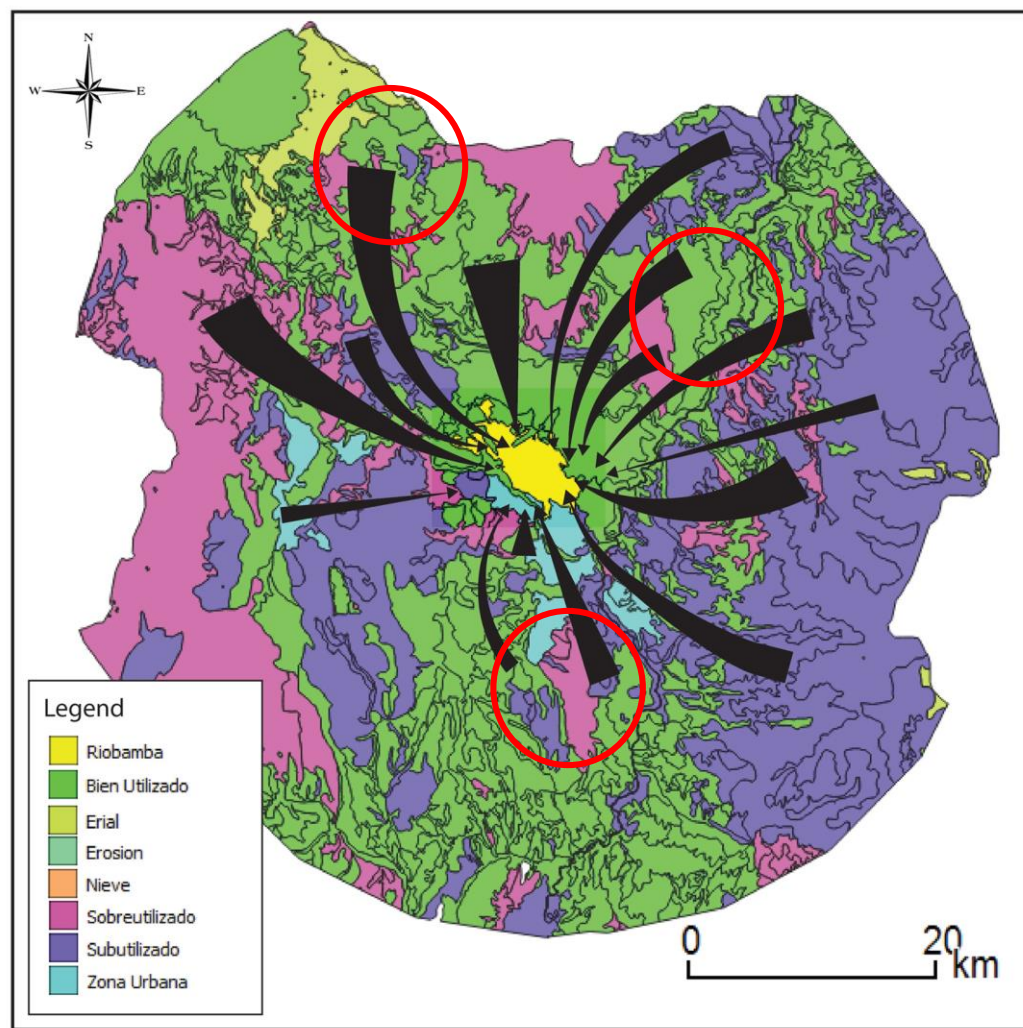


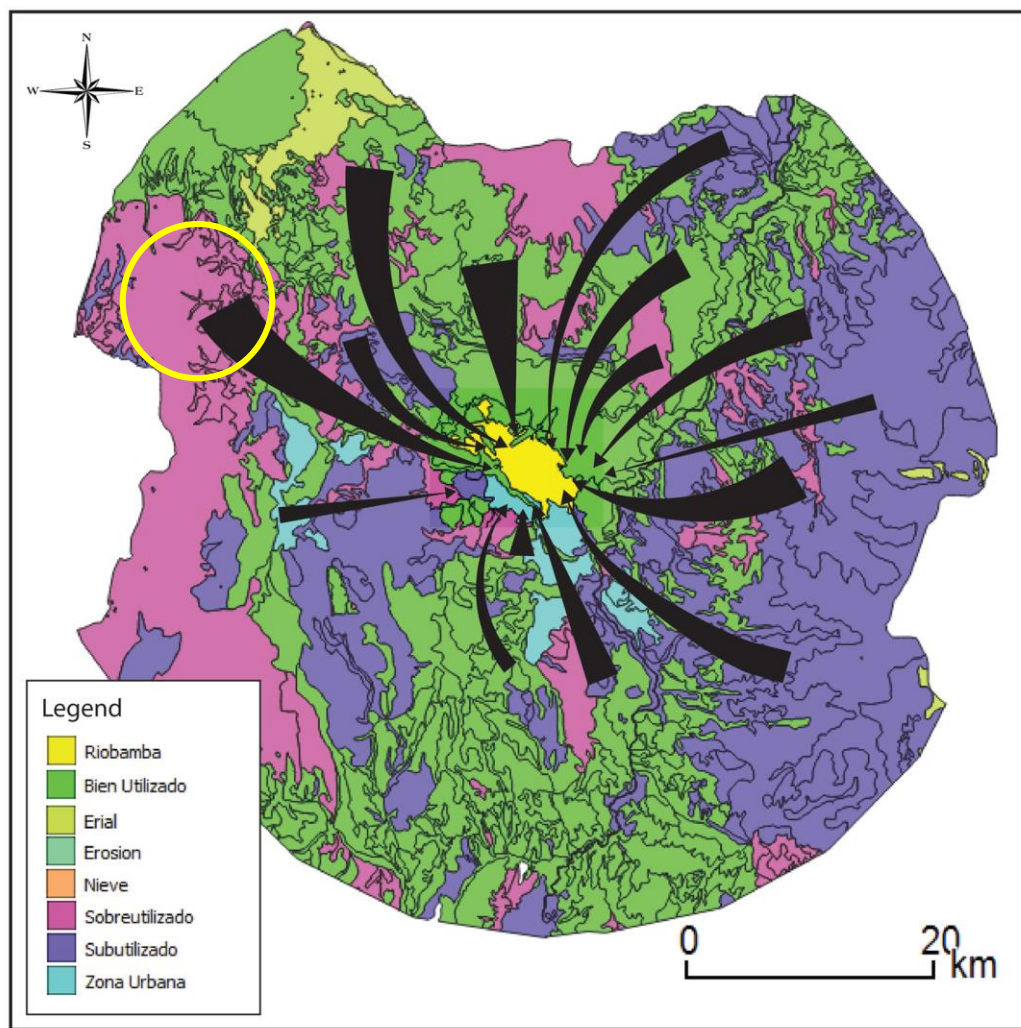
Production Percentage in Distance from City Centre



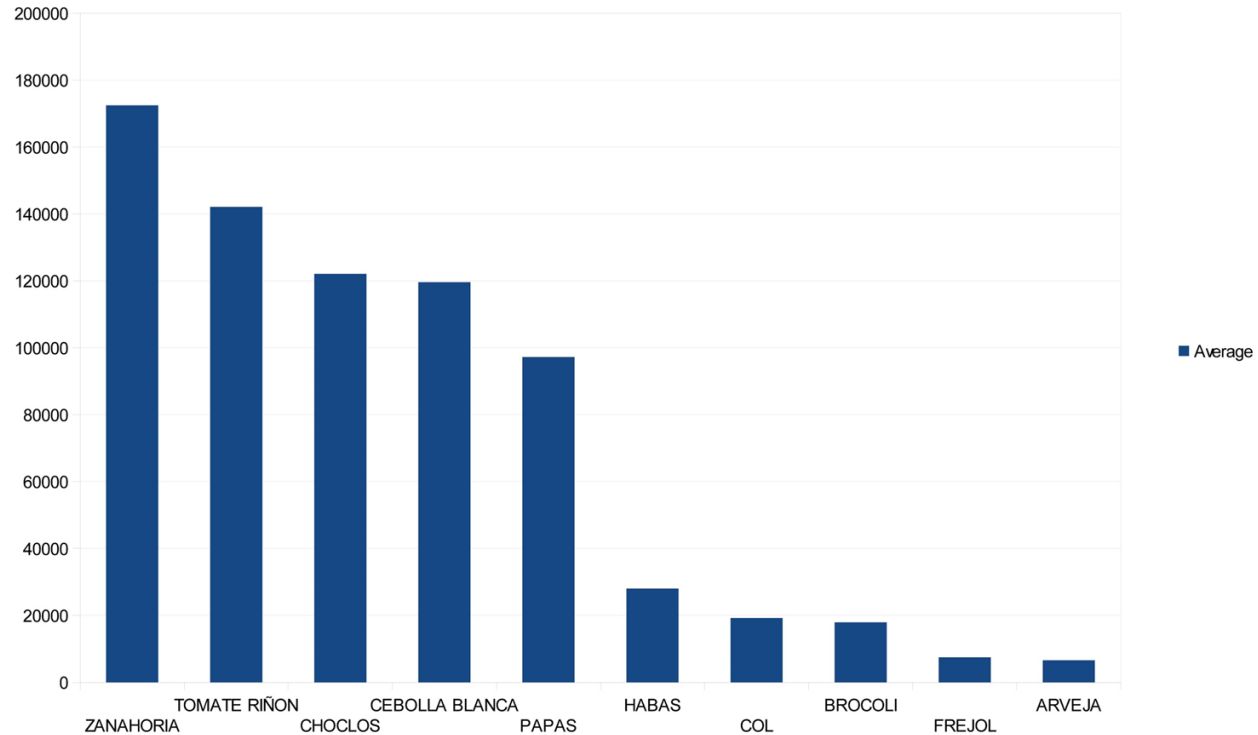




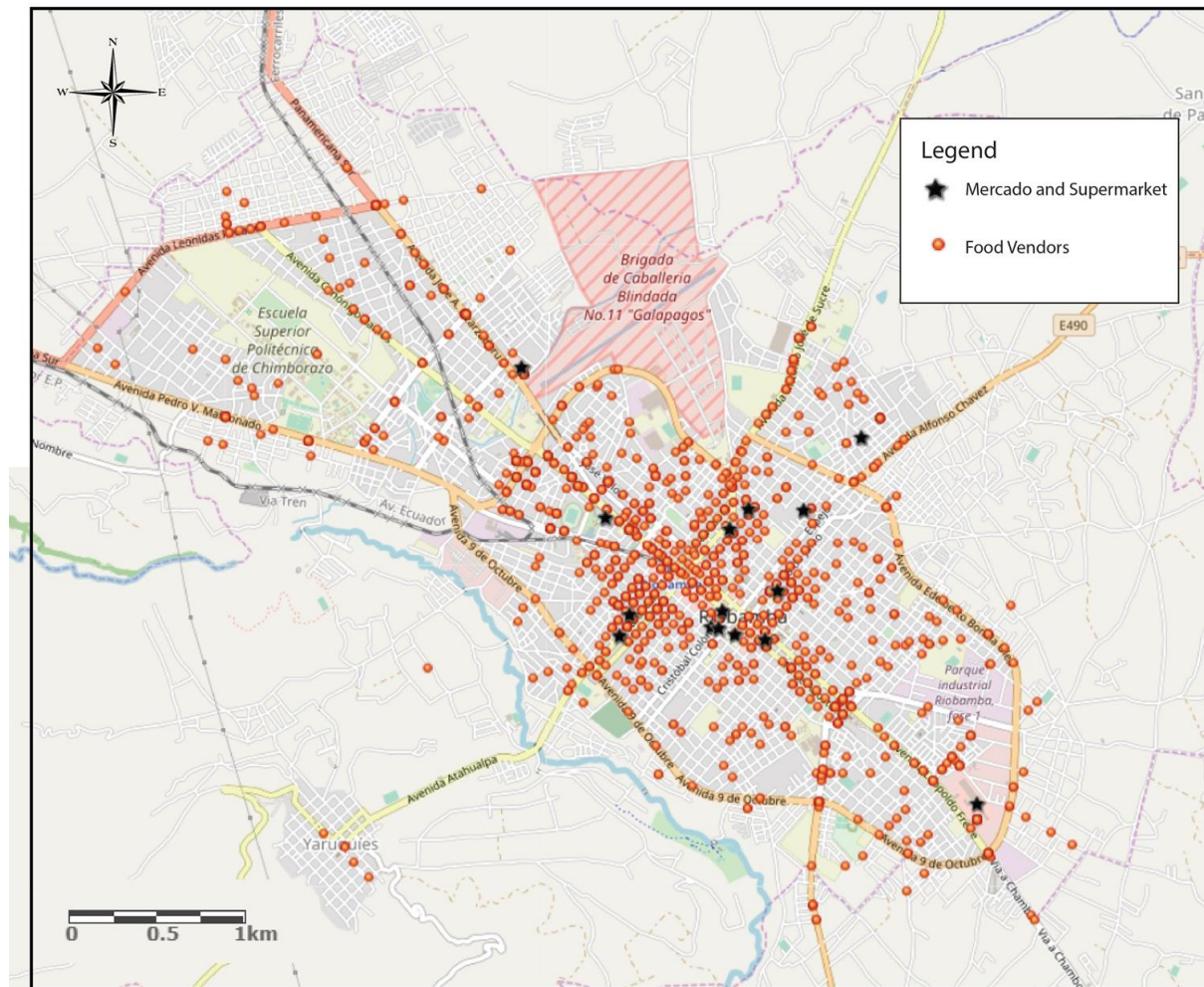




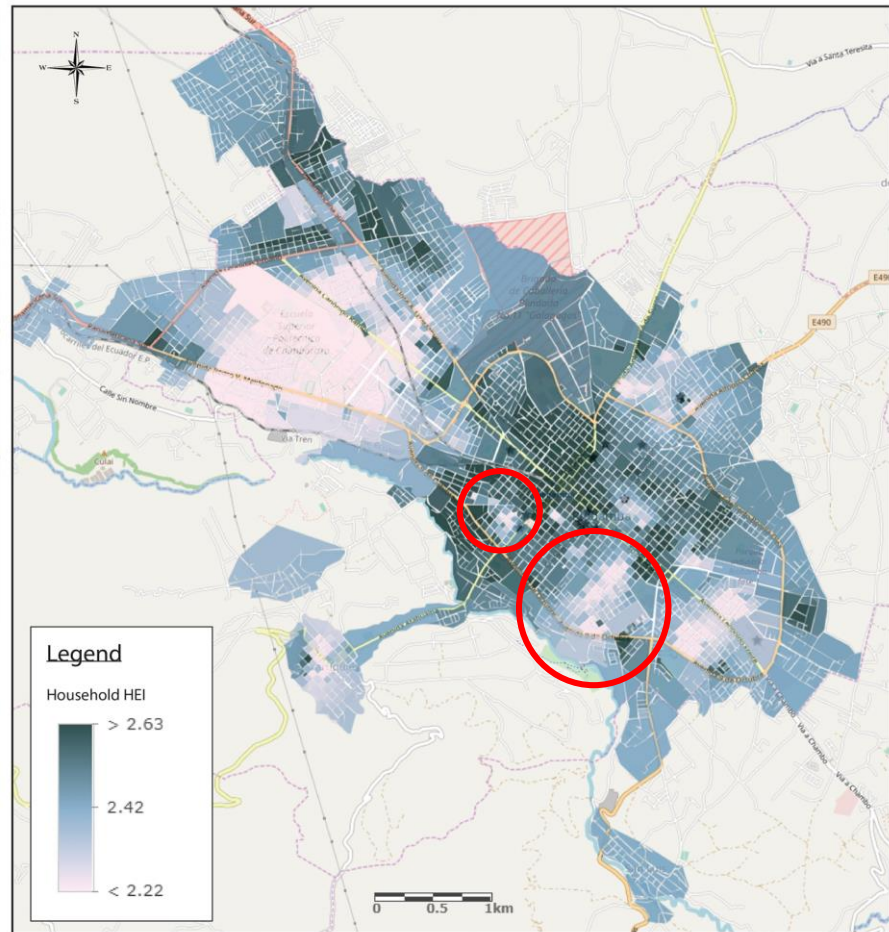
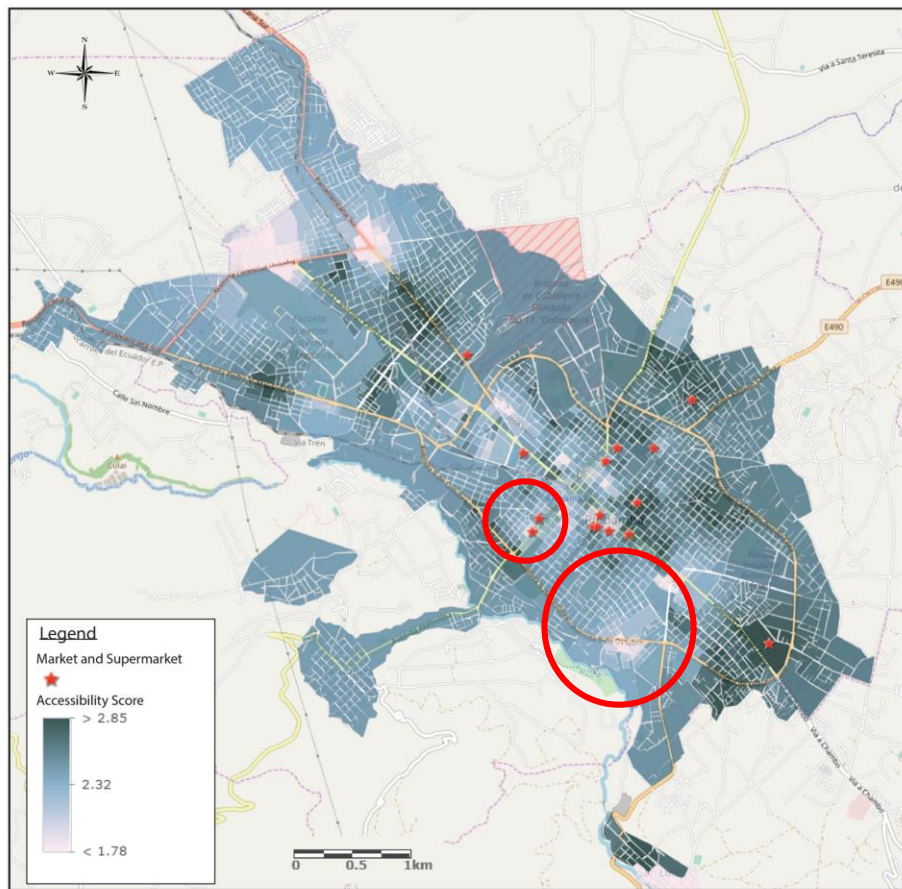
Average Crop Production Surplus

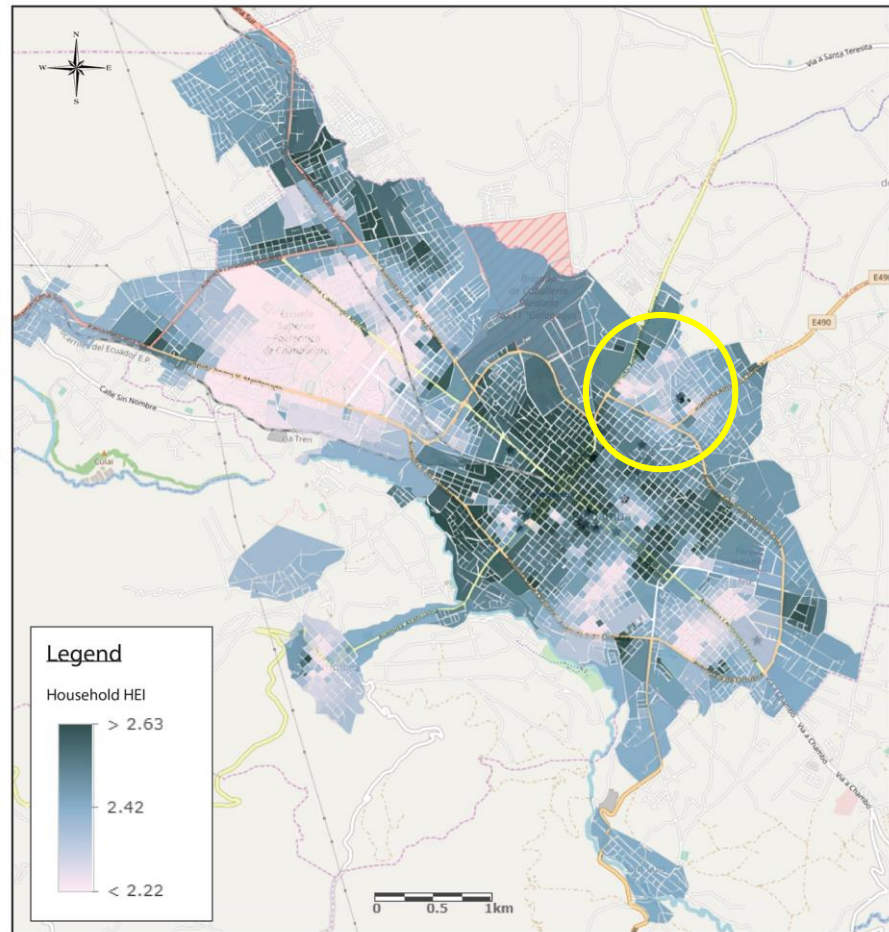
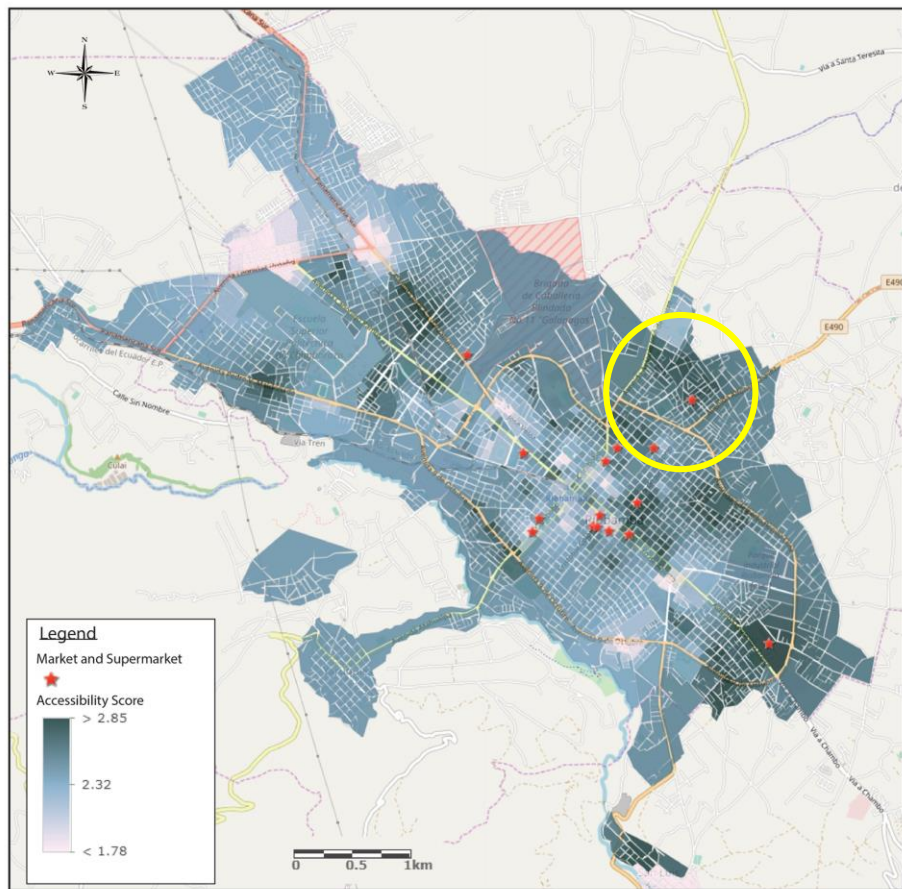






CATEGORIZATIO N	#
TIENDA COMIDA RAPIDA PICANTERIA, ETC	1
SUPERMARKET	2
MERCADO FRUTERIA VERDULARIA	3
AGROECOLOGICAL SPACE	4





Moving Forward

Accessibility vs Socio-Economic Data

Food Desert Model

Opportunities in City Centre

New Production Zones

Health Mapping